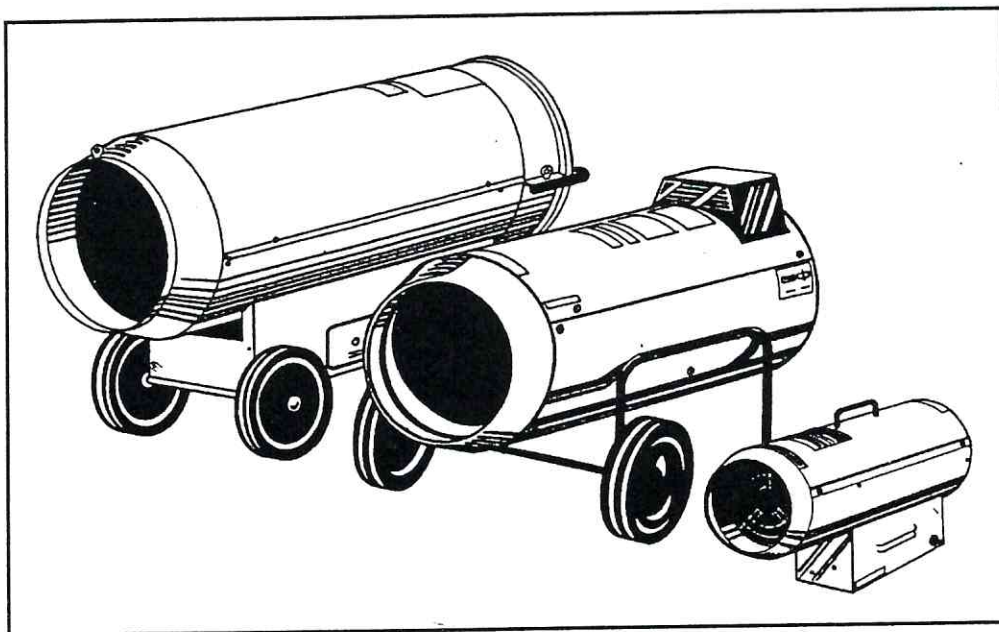


OPERATING & MAINTENANCE MANUAL

JETFIRE

INDUSTRIAL DIRECT GAS FIRED LPG HEATERS



THESE HEATERS ARE APPROVED FOR INDUSTRIAL USE ONLY

Made by :

SPTWATER AUSTRALIA PTY LTD
953 METRY St, NORTH ALBURY, NSW
AUSTRALIA

RETAIN FOR FURTHER USE

Congratulations on the choice you have made. This shows your level of technical knowledge and taste for beautiful things. You have in fact purchased an appliance of high technology made by the largest manufacturers of Industrial Direct Fired Space Heaters in the Southern Hemisphere. It is a professional and versatile unit that you will use for a long time; therefore please read and follow these operating instructions carefully.

TECHNICAL DATA (Manual & Automatic)

MODEL		J8	J15	J25	J33	J50	J70	J90	J90SA
Fuel Supply		Propane	Propane	Propane	Propane	Propane	Propane	Propane	Propane
Gas Pressure Min/Max	kpa	100	100	75/100	75/100	100/200	100/200	100/200	100/200
Fuel Consumption Min/Max	kg/	0.7	1.2	1.6/2	2/2.64	2.44	2.85.6	4.78.1	4.78.1
Heat Input	MJ/h	33.9	63.6	100.8	125	190	282	378	378
	kcal/h	8000	15000	25000	33000	50000	68000	90000	90000
	Btu/h	32000	60000	100000	132000	200000	270000	360000	360000
Air Flow	L/s	84	139	195	237	834	834	834	2223
Electricity Supply	V	220-240	220-240	220-240	220-240	220-240	220-240	220-240	220-240
	ØHz	1/50-60	1/50-60	1/50-60	1/50-60	1/50-60	1/50-60	1/50-60	1/50-60
Motor	W/ARPM	27/0.19/1300	27/0.19/1300	100/0.75/1300	100/0.75/1300	150/1.0/2800	150/1.0/2800	150/1.0/2800	750/6.1/1400
Limit Thermostat	°C	100+5	100+5	100+5	100+5	100+5	100+5	100+5	100+5
Air Proving Switch		20g	20g	20g	20g	20g	20g	20g	20g
Approx. Heating Area	m ²	200	400	681	899	1226	1906	2450	3000
Minimum Room Volume	m ³	160	300	500	660	1200	1400	2000	2000
Jet Size	mm	0.55	0.7	1.15	1.25	1.5	1.6	2.0	2.2
Weight	k	6.1	8.2	15	16.4	28	34	38.5	51
Dimensions LxWxH	mm	450x210x330	500x240x370	670x330x520	730x330x520	950x540x530	1050x540x530	1050x540x530	1270x610x838

The manufacturer reserves the right to modify design features and technical data without notice.

INTRODUCTION

The JETFIRE range of portable heaters has been designed to give safe, efficient and reliable service. Like any other piece of equipment; however, the heater will only operate at maximum efficiency if the correct operating sequences are followed and proper attention is given to cleaning and maintenance procedures.

The purpose of this manual is to provide up to date information necessary to the user for operating, cleaning and servicing the heaters, together with fault finding techniques and general specifications details and diagrams. The information given, however, may be subject to revision in compliance with the policy of continual improvements.

HEALTH AND SAFETY AT WORK

Manufacturers and suppliers of products for use in the workplace have a duty to ensure, so far as is reasonably practicable, that such products are safe and without risk to health when properly used and to make available to users of such products adequate information about their safe and proper operation.

The JETFIRE range of heaters should only be used in the manner and purpose for which they were intended and in accordance with the recommendations detailed in the Manual. Our range of heaters has been designed, produced and inspected with safety in mind; however, there are certain basic precautions which should be taken by the user and in particular, attention is drawn to the safety precautions in this Manual and in the Operating Instruction stickers on the unit itself.

It is imperative, therefore, that all persons who may make use of the heaters, have all the information and instructions they require to ensure that they are fully aware of the hazards and they know both the purpose and correct manner of operation of our heaters.

OPERATING INSTRUCTIONS (Manual Models)

TO START & USE

1. Turn Gas Supply on at Cylinder
2. Turn gas cock (15) to the Open position.
3. Turn power switch (16) to the On position.
4. Depress gas relay valve knob (22) and at the same time depress piezo ignitor knob (17) repeatedly until ignition has occurred. Maintain the gas relay knob depression for a minimum of 20 seconds after which the burner will remain lit and the heater is in normal operation.
5. WHERE FITTED. Adjust the Gas Pressure Regulator (12) to the desired setting.

TO STOP (NORMAL OPERATION)

1. Turn Gas Supply off at Cylinder
2. Turn gas cock (15) to the closed position.
3. After allowing the fan only to run for 45/60 seconds for cool-down turn the power switch (16) to the Off position.
4. Remove the electrical plug from the mains power socket.

TO STOP (EMERGENCY SHUTDOWN)

1. Turn power switch (16) to the Off position
2. Turn gas supply off at the Cylinder
3. Turn gas cock (15) to the Closed position
4. Remove the electrical plug from the mains power socket.
5. Make sure that before restarting the heater the cause of the emergency has been rectified/removed.

OPERATING INSTRUCTIONS (Automatic Models)

TO START & USE

1. Turn gas supply on at Cylinder
2. Turn gas cock (15) to the Open position
3. WHERE FITTED. This unit can be fitted with a thermostat. If required please contact your service agent for further information. Set operating temperature to the desired position on the thermostat.
4. Turn power switch (16) to the Flame position. This will start the ignition cycle for the electronic flame control box which after a pre-purge period will allow gas flow and automatically ignite.
5. WHERE FITTED. Adjust the Gas Pressure Regulator (12) to the desired setting.

TO STOP (NORMAL OPERATION)

1. Turn gas supply off at the Cylinder
2. Turn gas cock (15) to the Closed position
3. Turn power switch (16) to the Off position
4. Remove the electrical plug from the mains power socket.

TO STOP (EMERGENCY SHUTDOWN)

1. Turn power switch
2. Turn gas supply off at the Cylinder
3. Turn gas cock (15) to the Closed position
4. Remove the electrical plug from the mains power socket
5. Make sure that before restarting the heater the cause of the emergency has been rectified/removed.

OPERATING INSTRUCTIONS – SUMMER VENTILATION (ALL MODELS)

1. Turn power switch (16) to the On position. (On A/AS models to the FAN position)

NOTE: Do not turn the Gas Supply on at the Cylinder when the heater is being used as a summer ventilator.

MAINTENANCE INSTRUCTIONS

After every heating season, or sooner if used in a dirty atmosphere, carry out the following maintenance procedures on your heater.

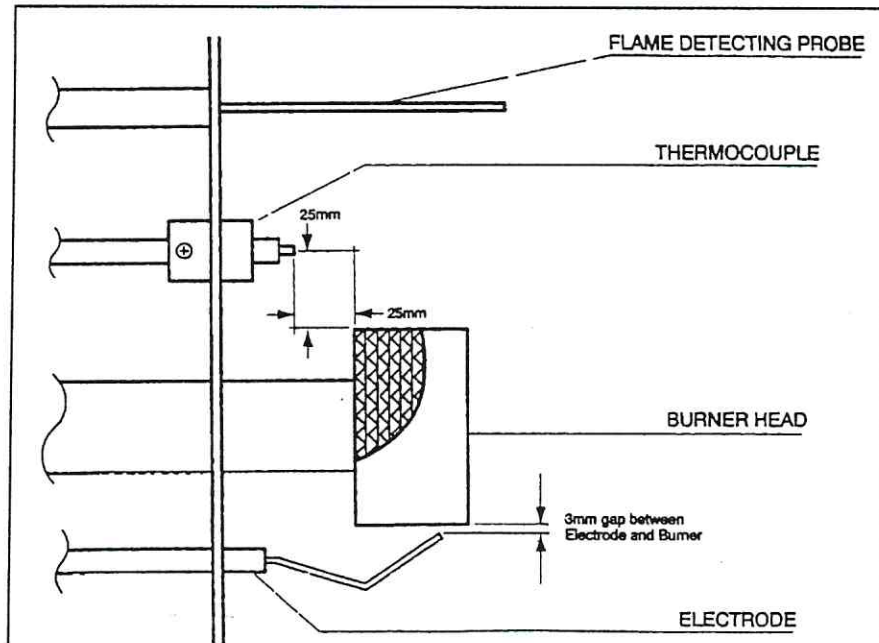
GENERAL

Disconnect the heater from the electricity main power socket and from the gas cylinder. Remove the screws retaining the covers and remove the covers.

BURNER SERVICE

Remove the retaining clip (39) and remove the gas jet assembly from its seat. Remove the gas jet (40) check it and clean it by blowing in the opposite direction to the gas flow..

Remove the combustion chamber assembly (be careful to remove all screws/bolts and electrical connections holding it to the rest of the heater) and remove from it the burner head assembly. Clean the burner head assembly by using an airline. Where fitted check the ionisation electrode, ignition electrode and thermocouple for positioning and wear referring to the drawing below.



Reassemble the above using reverse order and remake any threaded joints in the gas line using Loctite 577.

GAS SUPPLY

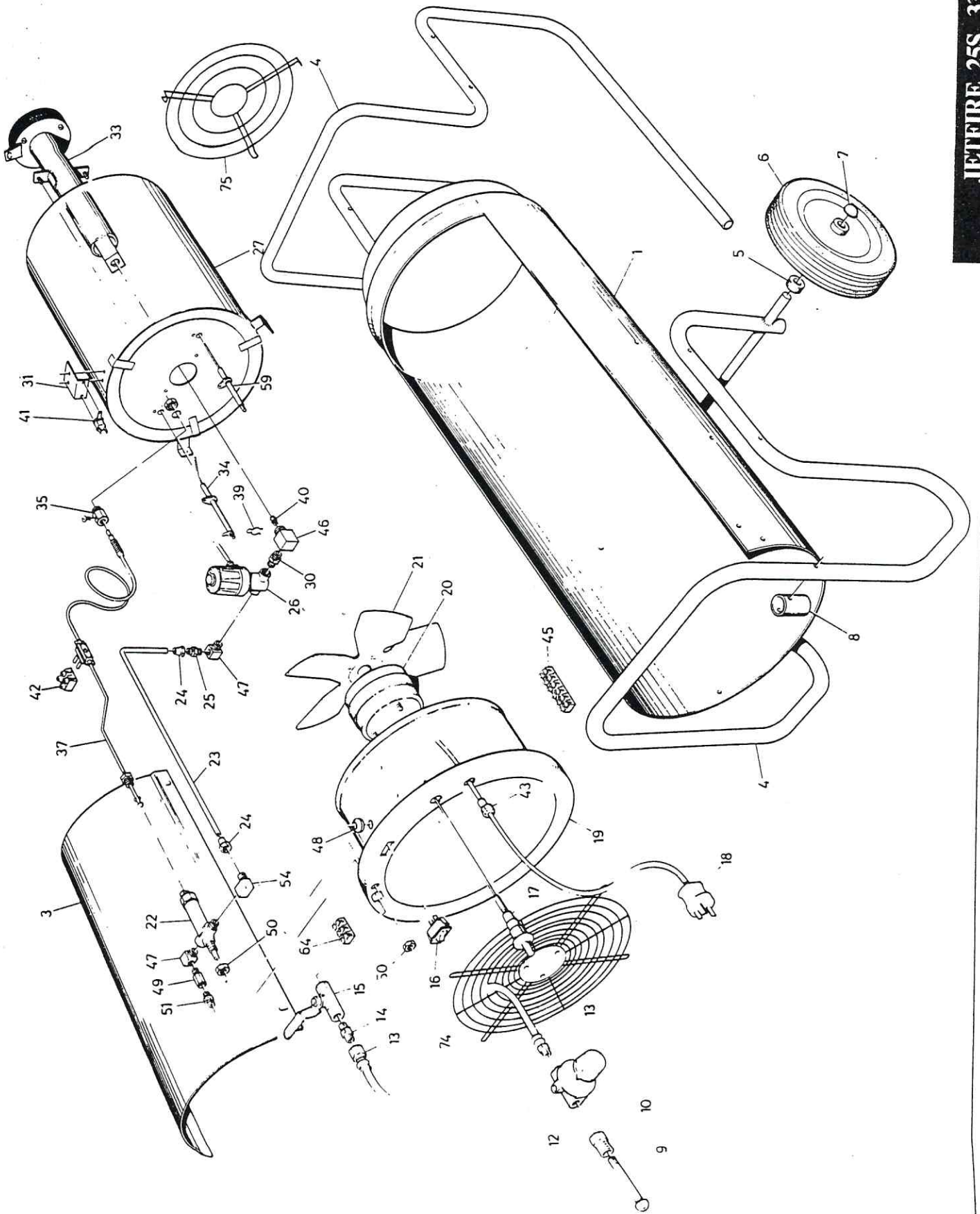
Check the tightness on the gas supply hose and check pipe connections in the gas line. LPG gas has a distinctive smell and leaks can usually be detected immediately by this fact. If a leak is suspected extinguish all naked flames and close the cylinder valve. **Never look for a leak using a naked flame but trace by smell and confirm by brushing a soap solution over the suspected leak.** Remake any threaded joint in the gas line using Loctite 577.

ELECTRICAL

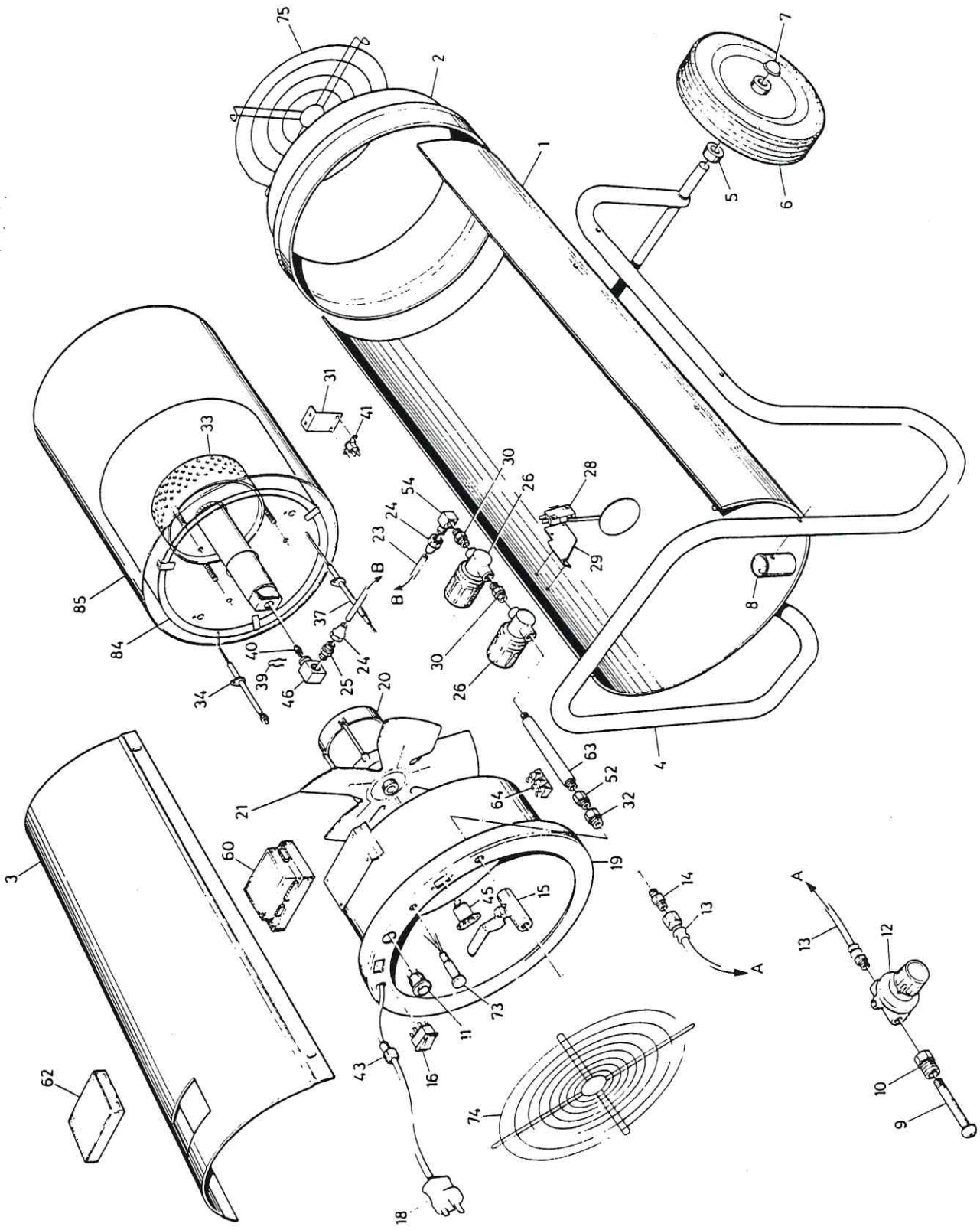
Check that the motor fixing bolts are tight and make sure that the fan fixing screw at the fan boss is tight. Check the limit thermostat junction for continuity. Check that all electrical connections are tight and in good condition.

GENERAL

Reassemble the heater making sure all screws and fittings are tight. Reconnect and start the heater following the installation and operating instructions. Test the heater for correct operation.



JETFIRE 25S. 33S. 45S.



JETFIRE 70A. 70AS. 90A. 90AS.

